



# PROTECTIVE COATING SOLUTIONS

INDUSTRIAL | AUTOMOTIVE | MARINE | AGRICULTURAL | BLAST MITIGATION | PROTECTIVE COATINGS



# WHAT IS LINE-X?

LINE-X is a professionally applied, high-performance, spray-on protective coating. Since 1993, LINE-X has been a staple of the automotive aftermarket as a premier spray-on truck bedliner, and has since expanded to offer a wide variety of other products and services. Today, LINE-X specialises in multiple sectors, including:

- **INDUSTRIAL**
- **AUTOMOTIVE**
- **AGRICULTURAL**
- **MARINE**
- **MILITARY/DEFENCE**

## HOW IS LINE-X USED?

LINE-X can be applied to the surface of just about anything. LINE-X coatings form permanent bonds at the molecular level, giving them excellent adhesion to a wide variety of surfaces. Whether applied to metal, fibreglass, concrete or wood, LINE-X can absorb impact and resist damage by remaining both flexible and strong, without losing adhesion.

### PROTECTS A WIDE VARIETY OF SURFACES

- **WOOD**
- **METAL**
- **MASONRY**
- **ALUMINIUM**
- **CONCRETE**



- **CEMENT**
- **FIBREGLASS**
- **STYROFOAM**
- **DRYWALL**
- **MUCH MORE!**





# SCIENCE BEHIND LINE-X PERFORMANCE

LINE-X combines specialised equipment with extensive product development to yield the right materials, products and procedures to meet virtually any demand. After decades of research, LINE-X has created a comprehensive coatings portfolio that includes polyurethanes, polyureas, aliphatic and hybrid coatings.

Each coating differs at a molecular level resulting in distinct physical characteristics that are ideal for certain applications and industries. Tensile strength, elongation, hardness and UV stability are all factors that influence product performance and durability.

## PHYSICAL PROPERTIES

- NO VOCs, 100% SOLIDS
- FAST CURE TIMES, CAN BE SPRAYED VERTICALLY WITHOUT DRIPPING
- HIGH "SHORE D" HARDNESS RATING
- TENSILE STRENGTHS UP TO 6,600 PSI
- HIGH CHEMICAL RESISTANCE
- UV STABILITY
- TEAR STRENGTHS UP TO AND EXCEEDING 780 LBS/IN

## PROVEN PROTECTION FOR OVER 25 YEARS

LINE-X has been put to the test both in the lab and in harsh, real-world conditions. These are the areas in which LINE-X outperforms the rest.

### CORROSION PREVENTION

LINE-X coatings are designed to create an impenetrable barrier between valuable equipment and nature's harshest elements, such as high humidity, salt water or extreme temperature changes.

### ABRASION AND IMPACT PROTECTION

Laboratory tests demonstrate excellent levels of abrasion and impact resistance under just about any severe-use condition. LINE-X outperformed all other leading materials, including carbon and stainless steel.

### SEAMLESS BARRIER

LINE-X coatings are ideal for secondary containment applications, providing a seamless protective barrier ideal for areas in which petroleum products, chemicals or harmful environmental contaminants are stored.

### ENHANCED DURABILITY

LINE-X permanently bonds to most materials at the molecular level, creating a unique composite unlike any other. Its physical characteristics vary by chemical make-up but each LINE-X coating is engineered to find the perfect balance of strength and flexibility – the secret combination to a highly durable coating.

# INDUSTRIAL COATINGS:

## OIL AND GAS



The offshore industry often puts up high demands for paints and corrosion protection. Constant wear, wave strokes, chemical influences and extreme weather conditions are just some of the parameters making it hard to find durable paint or corrosion protection. Furthermore, the offshore industry is often characterised by constricted working conditions making prolonged maintenance tasks complicated. Therefore it is important with a coating which is easy to apply while at the same time being rapid-hardening.



### OIL AND GAS

All those properties are possessed by LINE-X, a pure polyurea, which is being utilised within the offshore industry. LINE-X is applied by high pressure spraying, resulting in a dense and jointless membrane, capable of adhering to aluminium, steel, wood, reinforced concrete, glass fibre, foam and other materials.

### BENEFITS:

- WATERTIGHT SEAL
- HEAVY AND FINE TEXTURE FINISHES
- EXTREMELY DURABLE
- TOUGH IMPACT AND ABRASION RESISTANCE
- CORROSION PREVENTION
- SEAMLESS MEMBRANE





# INDUSTRIAL COATINGS: SECONDARY CONTAINMENT



LINE-X stands out as one of the most competent lining systems for secondary containment. LINE-X's chemical resistance, durability, crack-bridging and seamless seal makes LINE-X a top choice for industries who are having to provide protection to their secondary containment assets. LINE-X is tolerant to moisture, allowing our applications to take place during adverse weather conditions where other conventional materials come up short.



## SEAMLESS PROTECTION ON COMPLEX STRUCTURES

LINE-X is broadly utilised for surface protection against chemicals, abrasion and water-ingress as well as offering immense durability, excellent crack bridging properties and seamless seal.

### BENEFITS:

- FAST RETURN TO SERVICE
- WATER-TIGHT SEAL
- SEAMLESS PROTECTION
- GREAT ADHESION TO CONCRETE
- CRACK-BRIDGING - 400% ELONGATION
- ENVIRONMENTALLY SAFE



# INDUSTRIAL COATINGS: LOADING BAYS



Loud bangs, noisy vibrations and the deafening tones of loading and unloading cargo is enough to drive anyone crazy! When high noise levels of a short duration are generated on a regular basis, they have to be controlled not to exceed 60 dB in accordance with the recommendations of World Health Organisation (section 3.5). LINE-X's sound absorbing properties have an absolute noise level of 54 db when sprayed at the desired 5mm thickness.



## REDUCED NOISE LEVELS, LONG-LIFE PROTECTION AND EASY TO CLEAN

LINE-X offers excellent abrasion resistance, chemical resistance to cleaning agents, extremely easy to clean and fantastic noise absorbing capabilities. As well as all these great features, LINE-X's fast gel time offers an incredibly quick return to service.

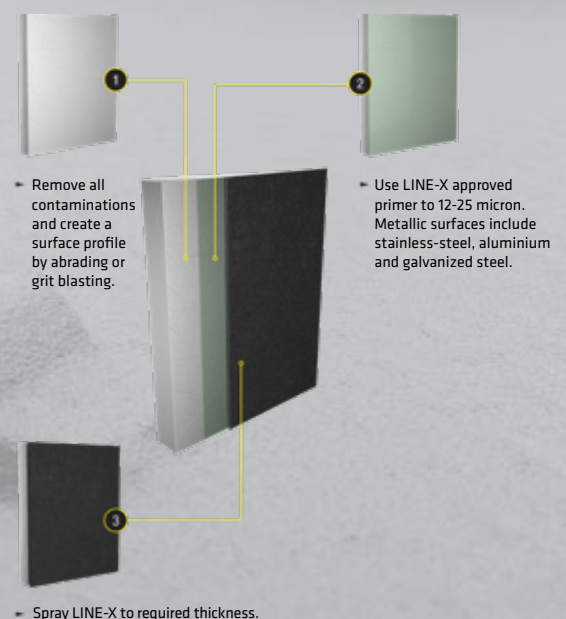
### BENEFITS:

- FAST RETURN TO SERVICE
- SOUND ABSORBING
- CHEMICAL RESISTANT
- EXTREMELY DURABLE
- LONG-LIFE PROTECTION
- SIMPLE TO CLEAN
- ENVIRONMENTALLY SAFE

## IT'S ALL ABOUT PREPARATION

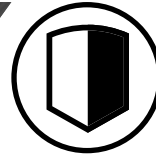
LINE-X is applied by our approved network of mobile applicators who knows what it takes to do the job right, from initial preparation down to the final coat of LINE-X.

We have developed systems which have been tried and tested, so we know our professional application methods of fit for purpose.





## PROTECTIVE COATINGS: METAL FABRICATION



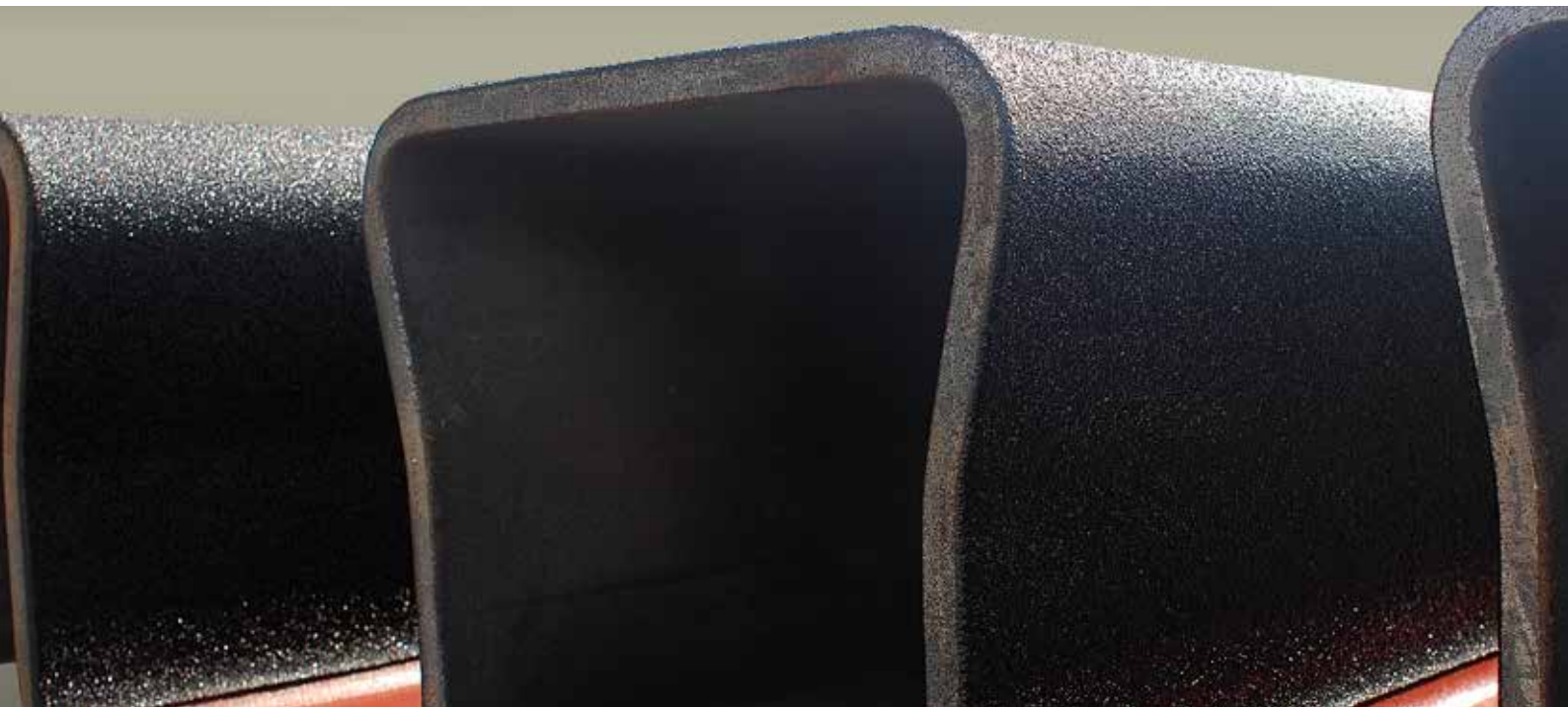
Metal Fabricators are turning to LINE-X as an alternative to galvanising. By applying LINE-X to the fabricated steel you are able to offer prevention against rust and corrosion along with cosmetically pleasing looks. LINE-X is available in virtually any colour so fabricated items can be customised to meet individual requirements. LINE-X offers a great alternative to paints, powder coat and galvanising. The fact that LINE-X is touch dry in 3 to 5 seconds and can be handled almost immediately makes it an obvious choice for manufactures where the turn around time for projects is paramount.

### ENDLESS POSSIBILITIES

LINE-X can be used for hand rails, gates, fences, railings, poles and so much more, the Possibilities really are endless!

### BENEFITS:

- FAST TURN-AROUND TIME
- PREVENTS CORROSION
- VARIOUS THICKNESS AVAILABLE



# PROTECTIVE COATINGS: AGRICULTURAL



Farmers rely on their equipment to maximise efficiency. Large scale farming operations utilise massive, expensive machinery to ensure high product yield. LINE-X provides protective coatings solutions that avoid down-time, extend machine life, increase productivity and lower operating costs by protecting valuable parts and equipment. Safeguarding crucial equipment and machinery offers valuable savings for mid-sized and small-scale farming operations as well.



## NUMEROUS APPLICATIONS

Common application that truly benefit from LINE-X protection are: livestock trailers, animal pens, tractors, silos, crop sprayers, milk parlours, spreaders, feed storage, potato rollers and more!

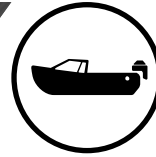
## BENEFITS:

- PROTECT HEAVY FARM EQUIPMENT
- EXTEND LIFESPAN OF ESSENTIAL TOOLS AND MACHINERY
- SAFE AROUND CROPS AND ANIMALS
- SEAL BUILDINGS, SILOS, BARNs
- MINIMISE DOWNTIME
- RESISTANT TO CHEMICALS FOUND IN PESTICIDE AND ANIMAL WASTE
- FAST TURN AROUND TIME





# PROTECTIVE COATINGS: MARINE



The marine environment offers a unique challenge when it comes to protecting against the destructive nature of salt and water. LINE-X is the perfect choice if you want an airtight and watertight seal, and is unrivalled with its protective qualities against rust, abrasion, and impact. LINE-X offers a reduction in surface slippage, and even in deep sea environments where sunlight is intense LINE-X have solutions that resist fading and discolouration while staying cool to the touch.



## PROTECTION 24/7

Rust and corrosion never sleep, that's why marine maintenance is a constant effort. Why not let LINE-X shield your investment from damaging environmental forces all day, every day?

### BENEFITS:

- REDUCE MAINTENANCE COST AND TIME
- FAST TURNAROUND TIME
- FLEXIBILITY TO ALLOW FOR MOVEMENT
- TOUGH IMPACT AND ABRASION RESISTANCE
- PREVENTS LEAKS, RUST, AND CORROSION
- DRIES IN SECONDS!
- FACTORY FINISHED LOOK
- SLIP-RESISTANCE



# AUTOMOTIVE COATINGS: UTE LINERS



LINE-X Spray-On Ute Liners consistently receive top marks for customer satisfaction. Each and every LINE-X applicator sprays the highest quality, toughest bedliners that we can engineer. Backed by a Lifetime Warranty, a LINE-X Ute Liner is guaranteed not to crack, bubble or flake.

That is why the name LINE-X has become synonymous with toughness. When you're looking for durability, function and value, LINE-X's proven polyurea formula is what you need.



## **BENEFITS:**

- LIFETIME WARRANTY
- 300% TOUGHER THAN INDUSTRY STANDARD
- WITHSTANDS HARSH CHEMICALS, FUEL AND SALTWATER
- PREVENTS LEAKS, RUST, & CORROSION
- EXTREME ABRASION AND IMPACT RESISTANCE
- WILL NOT CRACK, BUBBLE OR DELAMINATE
- ENVIRONMENTALLY FRIENDLY, VOC-FREE
- UV PROTECTION, CUSTOM COLOUR OPTIONS
- PERMANENT BOND, NO LOST CARGO SPACE
- TESTED FOR QUALITY VIA MULTI-POINT INSPECTION
- EASY TO CLEAN AND REPAIRABLE





# AUTOMOTIVE COATINGS: VAN LINING



From one van to a fleet of vans, LINE-X spray-on van linings offers unrivalled protection to keep your vehicle looking and performing great.

Made for service vans that are used in the field day-in and day-out, LINE-X offers greater durability and corrosion resistance than typical automotive paint. Load areas sprayed with LINE-X can handle the abuse of being repeatedly loaded and unloaded with equipment and supplies.



## JET WASHABLE LOAD AREA

With LINE-X spray-on van lining you can jet-wash your load area with no risk of damaging the load area, making it quick and easy to clean.

## BENEFITS:

- JET-WASHABLE AND STEAM CLEAN FRIENDLY
- RESISTS STAINING FROM HARSH CHEMICALS
- PREVENTS LEAKS, RUST, AND CORROSION
- ENHANCED DURABILITY AGAINST IMPACT AND ABRASION
- WILL BOND DIRECT TO METAL OR ON TO EXISTING PLY-LINE
- FAST RETURN TO SERVICE





# AUTOMOTIVE COATINGS: ACCESSORY COATING



LINE-X has a proven track record of being tough, and for years it's protected the load areas of pick-ups and work vans. It's been so successful that people have started to protect their accessories and in some cases they have completely encapsulated their entire vehicle. LINE-X spray-on coatings can be seen on bumpers and grilles, winch plates, bull bars, side steps, roof racks, and more.



## WHY LINE-X THE EXTERIOR?

The fantastic protective qualities of LINE-X adds another level of protection to your vehicle. It has high abrasion resistance to repel scratches and superior tensile strength to guard against impact damage. If you add on the fact that it's impervious to road salt, you can see why it makes a lot of sense to encapsulate the entire vehicle.

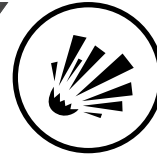
## BENEFITS:

- WATERTIGHT TO PREVENT CORROSION
- HEAVY AND FINE TEXTURE FINISHES
- PROTECTION FROM SCRATCHES AND DOOR DINGS
- TOUGH IMPACT AND ABRASION RESISTANCE
- CORROSION PREVENTION
- ADHERES TO EVERY CURVE AND CONTOUR OF SURFACE

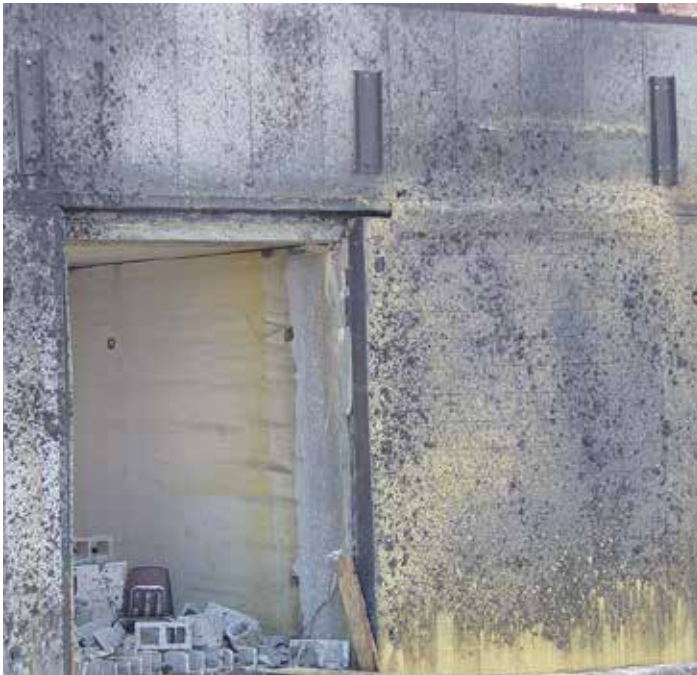




# MILITARY/DEFENCE COATINGS: BLAST MITIGATION



PAXCON® blast mitigation, (PX-3350) developed by LINE-X®, is a spray applied coating that is applied to walls and buildings in danger of being subjected to a bomb blast. PAXCON® coated walls stay together due to their ability to flex. This ability to flex allows PAXCON® coated walls to withstand explosions far greater than a normal uncoated wall. PAXCON® coatings are currently protecting military, civilian and government buildings around the world including the US Pentagon and buildings through out the UK.



## BLAST PROTECTION 24/7

Air Force Research Laboratory tests have provided evidence that PAXCON® coated walls can reduce the stand off distance by over 50%.

## BENEFITS:

- INCREDIBLE HIGH TENSILE AND TEAR STRENGTH
- PAXCON MATERIAL CAN WITHSTAND EXPLOSIONS UP TO 20 TIMES GREATER THAN A NORMAL COATED WALL
- GREAT ADHESION TO WOOD, STEEL, PLASTERBOARD, CONCRETE, BRICK, BLOCK AND MORE



Unprotected Wall



PAXCON protected Wall

# PRODUCT LINE:

## XS-350: PURE POLYUREA

XS

LINE-X XS-350 is a two-component, 100% high performance aromatic polyurea spray elastomer system containing no VOC's (Volatile Organic Compounds), 100% solid. XS-350 offers outstanding performance and superior elastomeric protective coatings for various substrates. XS-350 is designed as a user-friendly product for moisture insensitive applications because of its pure polyurea chemistry and offers exceptional adhesion properties for properly prepared substrates. The high performance formulation of XS-350 produces an excellent skin formation for chemical resistance and moisture protection.

### CORE ADVANTAGES:

- FAST RETURN TO SERVICE
- WATER-TIGHT SEAL
- SEAMLESS PROTECTION
- EXCELLENT THERMAL STABILITY
- EXCELLENT CHEMICAL RESISTANCE
- ENVIRONMENTALLY SAFE

### GREAT AHESION TO:

- WOOD
- METAL
- FIBREGLASS
- SPRAY-FOAM

### CHEMICAL TECHNICAL DATA

Mix Ratio by Weight	100 : 114 (Resin comp : Iso comp)
Mix Ratio by Volume	100 : 100 (Resin comp : Iso comp)
Gel Time*	4 – 6 seconds

\* Measured during application with high pressure spraying equipment under laboratory conditions at 20°C.

### BASIC PHYSICAL PROPERTIES

TEST NAME	TEST METHOD	VALUE
Impact	ASTM D2794	320 in. lbs. no failure
Pull-off Test-Adhesion XPM Prime	ASTM D4541	3000 psi no failure
Hardness, Shore D	ASTM D2240	63 +- 1
Tensile Strength (psi)	ASTM D412	3250
Elongation at Break (%)	ASTM D412	148%
Tear Strength	ASTM D624	708 pli
Taber Abrasion (mg Loss/1000 cycles)	ASTM D4060	19.6 mg

Note: The mechanical properties were measured by use of test specimens which were sprayed with a two-component machine and stored for 7 days under standard climatic conditions.





## PRODUCT LIST: OUR MOST POPULAR INDUSTRIAL PRODUCTS



### **XS-100**

XS-100 is a user-friendly polyurethane and polyurea formulation that has earned industry respect for its durable, long-lasting, high-performance qualities. Perfect for protecting your most valuable assets from abrasion, corrosion, and impact, XS-100 was designed with the highest chemical equilibrium in its polymerization network – softness vs. hardness, toughness vs. longevity, durability vs. impact, etc.

### **XS-152**

Any company looking for protection against abrasion and impact, but also needing flame retardant properties should look to XS-152. It has been tested for flame spread and smoke density per ASTM E-84. This product is ideal for the military and mining industries.

### **XS-252**

XS-252 is accepted by the Mine, Safety and Health Administration (MSHA) for use in the mining industry for protection against abrasion, corrosion and impact, as well as a sealant for shaft seals. This revolutionary product, has exceptional flame retardant properties that are ideal during the event of a fire and can be applied to any type of underground equipment, regardless of shape or size.

### **XS-350**

XS-350 is a pure polyurea coating with high-performance physical properties is perfect for applications beset with chemical damage or extreme impact and abrasion. XS-350 is very insensitive to moisture and can be seen widely used in the wastewater industry.

### **XS-470**

LINE-X XS-470 is a two-component, aromatic polyurea spray elastomer system that contains zero VOC (Volatile Organic Compounds) and it is 100% solids. XS-470 offers outstanding performance and superior elastomeric protective coatings for various substrates. XS-470 is designed as a user-friendly product for moisture insensitive applications because of its polyurea chemistry, and offers exceptional adhesion properties for properly prepared substrates. The

high performance formulation of XS-470 produces an excellent barrier for chemical resistance and moisture protection.

### **XS-650**

XS-650 is an aliphatic polyurea that provides outstanding UV stability with excellent color and gloss retention. It is a versatile coating with virtually limitless possibilities.

XS-650 can be applied in a thick-film application and offers exceptional adhesion properties for high-abrasion and high-use environments without the need of a UV-stable topcoat. With strong physical properties, it is an ideal coating for marine applications, theme parks, trolling motors, RV roofs, automotive applications, and products requiring extreme durability and UV protection.

### **XS-670**

XS-670 is a two-component, high performance aliphatic polyurea spray elastomer system with zero VOC's and is 100% solids. XS-670 is designed as a thin build, highly elastic protective coatings solution for fabrics. In addition to superior elastomeric properties, LINE-X XS-670 offers outstanding UV protection.

### **ULTRA**

Versatile, durable, thin build coating. LINE-X ULTRA is an aliphatic polyurea that can be sprayed thinner than standard elastomer coatings while still maintaining superior strength and reliability. This product can be used as a topcoat for polyurea and polyurethane systems on properly prepared substrates or as a standalone coating. With an application thickness up to 500 microns (0.5mm), LINE-X ULTRA competes with traditional powder coating and industrial paint with superior results. Excellent coating for specialty automotive applications.

**WITH OVER 20 FORMULAS AVAILABLE,  
LINE-X CAN BE USED TO PROTECT,  
REINFORCE, AND ENHANCE.**

For more information, please contact us using the information provided on the back of this booklet.



1300 559 597



/linexaustralia



/line-x-australia



/LINE-X Australia



@linexaus



linexaus.com.au